

LHCb Grid Activities @ IFIN-HH

RO-11-NIPNE

Agenda

- Site configuration
- Site status
- Results
- Problems encountered

Hardware configuration

Worker Nodes:

- 3 dual processor 3 GHz Xeons, 2 GB RAM, 80 GB
 - 15 dual processor 3 GHz Xeons LV, 2 GB RAM, 80 GB
 - 13 dual processor 2 GHz Xeons Core Duo, 2 GB RAM, 80 GB
 - *6 dual processor 1.6 GHz Xeon Quad Core, 4 GB RAM, 80 GB*
- beginning of 2008 102 cores

Storage Element & Computing Element:

- 2 Pentium 3 GHz, 2 Gb RAM (CE, SE – 500GB storage >> 2TB)

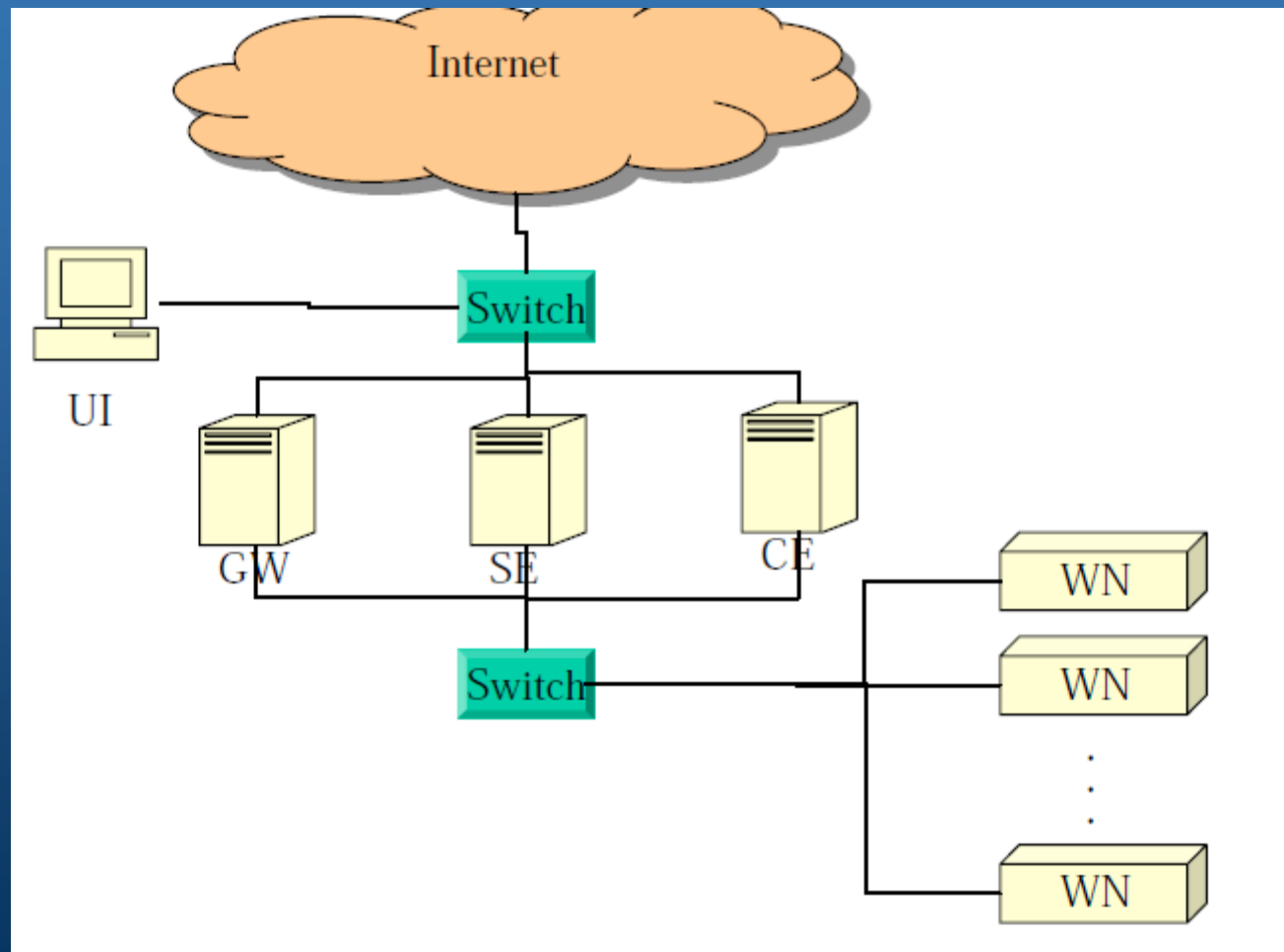
Hardware configuration

- *2 Gigabit Switches*
- *1 Gbs network connection*
- *UPS for the main machines (CE, SE, GW and switches)*
- *Cooling - 2 inverters x 48000 BTU*

Software

- SLC 3.0.8 32 bits installed on everything.
- From GRID middleware point of view we have installed glite 3.0.2 - standard software packages, corresponding to the typical CE, SE, WN and User Interface (UI)
- Using PBS batch system (3 queues defined – *dteam*, *ops*, *lhcb* with 1 CPU dedicated to the first two)
- Additional services to ease the management of the cluster: DHCP+TFTP server, DNS

Network configuration



Node installation procedure

- Configuring the necessary services (DNS, DHCP)
- Both the OS and the middleware are network installed and configured (DHCP + TFTP for loading a PXE pre-booting environment, then rpm packets installed from a local repository via HTTP)
- GRID middleware installed in the usual way using yaim

Site status

- The site was registered on October the 3rd 2006 into EGEE and received the name **RO-11-NIPNE** entering the testing period
- Site Functional Tests (SFTs) ran for several weeks and on November the 1st 2006 we obtained the certification entering the production zone
- Adress

<http://goc.grid.sinica.edu.tw/gstat/RO-11-NIPNE>

Site status

GStat: RO-11-NIPNE 08:51:45 11/29/07 GMT - @wgoc01

[home](#) [alert](#) [table](#) [service](#) [regional](#) [service](#) [metrics](#) [links](#) [?](#) [prod](#) [pps](#) [test](#) [baltic](#) [eela](#) [euchina](#) [eumed](#) [seegrid](#) [gilda](#) [trigrd](#) [euindia](#) [pi2s2](#) [grisu](#)

RO-11-NIPNE Status: OK

ok

GOC

graphs

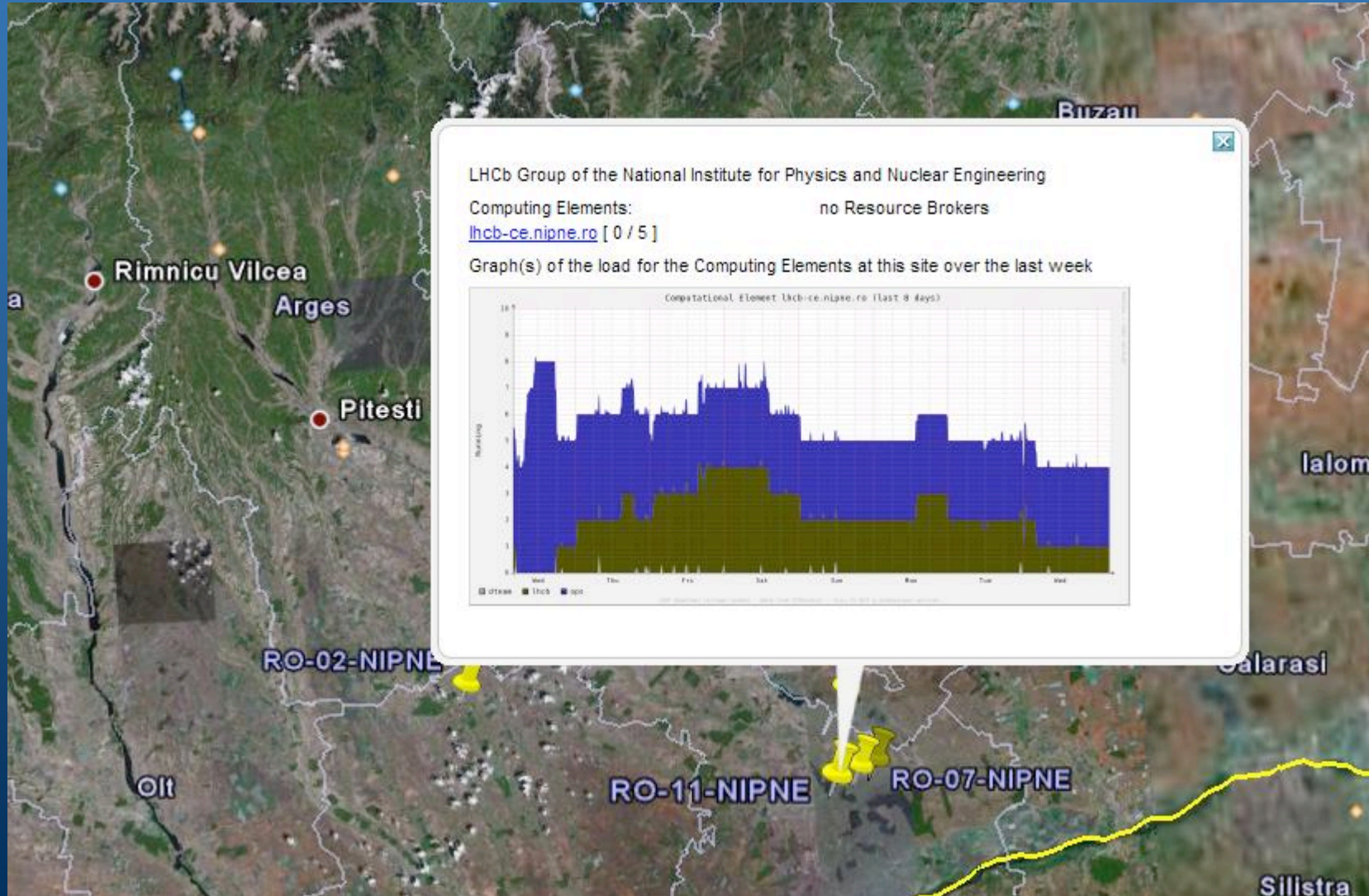
GOCDDB Configuration information:
status: Certified, type: Production
giis url: ldap://lhcb-ce.nipne.ro:2170/mds-vo-name=RO-11-NIPNE,o=grid

To test site GIIS:: ldapsearch -x -H ldap://lhcb-ce.nipne.ro:2170 -b mds-vo-name=RO-11-NIPNE,o=grid

GIIS response time(ms): ok	GIIS Entries: ok	GIIS Old Entries: ok	Total CPU Count: ok	Free CPU Count: ok	Running Jobs: ok	Waiting Jobs: ok	Total Available SE (GB): ok
2805.55	74.00	0.00	36.00	35.00	1.00	0.00	434.90
SE Usage (GB): ok	CE Total CPU: ok	CE Free CPU: ok	CE Running Jobs: ok	CE Waiting Jobs: ok	MAX CPU: ok	AVG CPU: ok	
0.26	36.00	35.00	1.00	0.00	36.00	33.00	

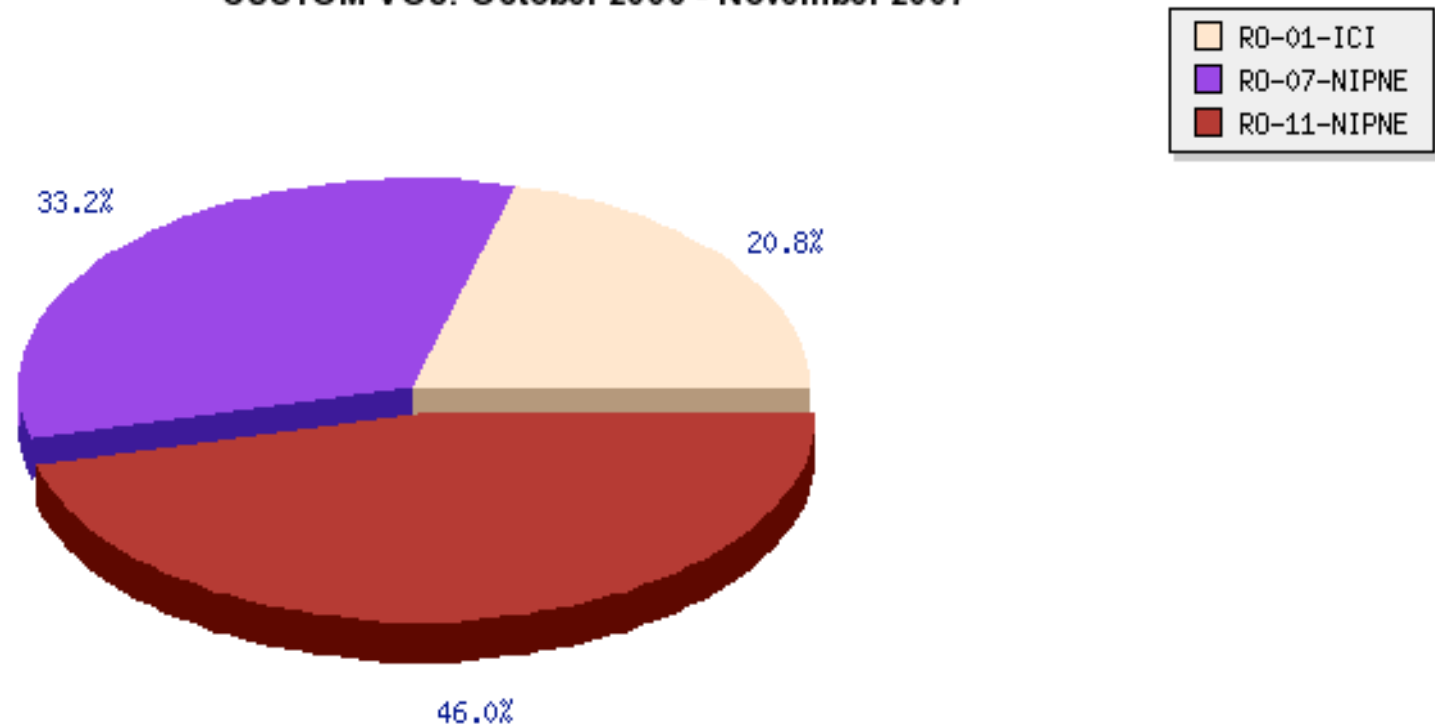
```
lhcb-ce.nipne.ro
GlueHostOperatingSystemName: Scientific Linux
GlueHostOperatingSystemRelease: 3.0.8
GlueHostOperatingSystemVersion: SL
GlueSubClusterPhysicalCPUs: 0
GlueSubClusterLogicalCPUs: 0
GlueHostApplicationSoftwareRunTimeEnvironment:
  LCG-2
  LCG-2_1_1
  LCG-2_3_0
  LCG-2_4_0
  LCG-2_6_0
  GLITE-3_0_0
  R-GMA
  VO-lhcb-XmlDDDB-v22r2
  VO-lhcb-Boole-v12r10
  VO-lhcb-DaVinci-v17r7
  VO-lhcb-Brunei-v30r14
  VO-lhcb-ParamFiles-v5r0
  VO-lhcb-DaVinci-v12r18
  VO-lhcb-Brunei-v30r15
  VO-lhcb-DaVinci-v18r0
  VO-lhcb-DaVinci-v19r1
  VO-lhcb-Gauss-v25r10
  VO-lhcb-Gauss-v25r10-slc3_ia32_gcc323VO-lhcb-XmlDDDB-v22r2-slc3_ia32_gcc323
  VO-lhcb-XmlDDDB-v30r14-slc3_ia32_gcc323VO-lhcb-Boole-v12r10-slc3_ia32_gcc323
  VO-lhcb-DaVinci-v12r18-slc3_ia32_gcc323VO-lhcb-DaVinci-v17r6-slc3_ia32_gcc323
  VO-lhcb-DaVinci-v17r7-slc3_ia32_gcc323VO-lhcb-DaVinci-v17r8-slc3_ia32_gcc323
  VO-lhcb-DaVinci-v18r0-slc3_ia32_gcc323VO-lhcb-DaVinci-v19r0-slc3_ia32_gcc323
  VO-lhcb-DaVinci-v19r1-slc3_ia32_gcc323VO-lhcb-DaVinci-v19r2
  VO-lhcb-DaVinci-v19r2-slc3_ia32_gcc323VO-lhcb-DaVinci-v19r3
  VO-lhcb-DaVinci-v19r3-slc3_ia32_gcc323VO-lhcb-Brunei-v30r17-slc3_ia32_gcc323
  VO-lhcb-DecFiles-v13r9-slc3_ia32_gcc323VO-lhcb-DecFiles-v13r10
  VO-lhcb-DecFiles-v13r10-slc3_ia32_gcc323VO-lhcb-ParamFiles-v5r0-slc3_ia32_gcc323
  VO-lhcb-DaVinci-v19r4
  VO-lhcb-DecFiles-v13r11
  VO-lhcb-DaVinci-v19r5
  VO-lhcb-DaVinci-v19r7
  VO-lhcb-DecFiles-v13r15
  VO-lhcb-XmlDDDB-v30r14
  VO-lhcb-DaVinci-v17r6
  VO-lhcb-DaVinci-v17r8
  VO-lhcb-DecFiles-v13r8
  VO-lhcb-Gauss-v25r8
  VO-lhcb-Gauss-v25r9
  VO-lhcb-DecFiles-v13r9
  VO-lhcb-DaVinci-v19r0
  VO-lhcb-Brunei-v30r17
  VO-lhcb-Gauss-v25r9-slc3_ia32_gcc323
  VO-lhcb-XmlDDDB-v22r2-slc3_ia32_gcc323
  VO-lhcb-Boole-v12r10-slc3_ia32_gcc323
  VO-lhcb-DaVinci-v17r6-slc3_ia32_gcc323
  VO-lhcb-DaVinci-v17r8-slc3_ia32_gcc323
  VO-lhcb-DaVinci-v19r0-slc3_ia32_gcc323
  VO-lhcb-DaVinci-v19r2
  VO-lhcb-DaVinci-v19r3
  VO-lhcb-Brunei-v30r17-slc3_ia32_gcc323
  VO-lhcb-DecFiles-v13r10
  VO-lhcb-ParamFiles-v5r0-slc3_ia32_gcc323
  VO-lhcb-Gauss-v25r11
  VO-lhcb-DecFiles-v13r12
  VO-lhcb-Gauss-v25r12
  VO-lhcb-Brunei-v31r10
  VO-lhcb-Brunei-v31r11
```

Site status



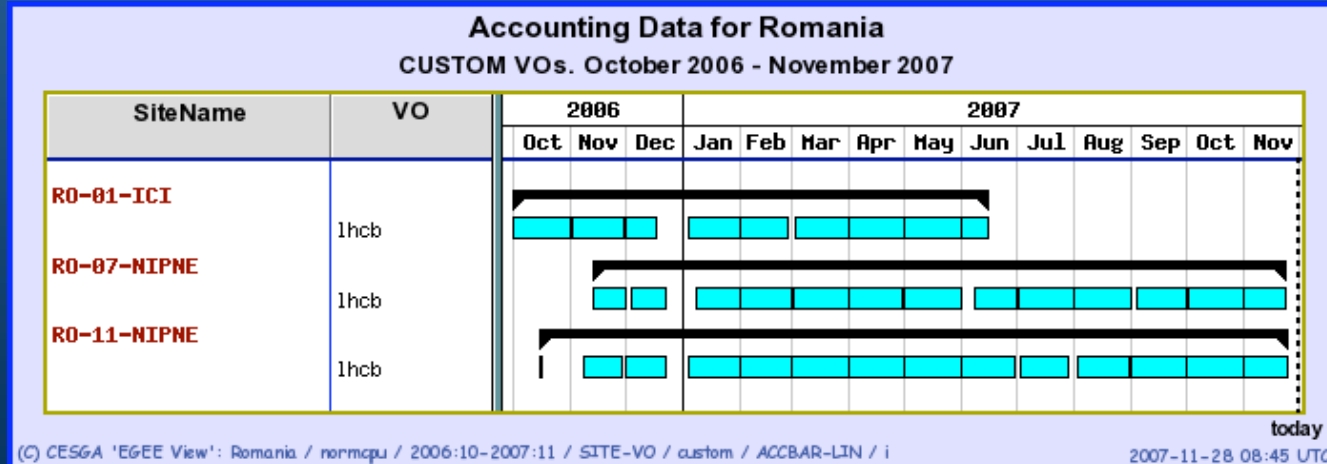
LHCb jobs

Romania Normalised CPU time per SITE
CUSTOM VOs. October 2006 - November 2007



LHCb jobs

Normalised CPU time [units 1K.SI2K.Hours] by SITE and VO				
SITE	lhc	Total	%	
RO-01-ICI	10,562	10,562	19.76%	
RO-07-NIPNE	18,366	18,366	34.36%	
RO-11-NIPNE	24,527	24,527	45.88%	
Total	53,455	53,455		
Percentage	100.00%			



Problems

- Cooling
- Power & network failures
- Middleware upgrades
- Installation of the experiment's software by the sgm team

Plans

- Development according to the experiment needs
- Have more jobs running
- Be online ~ 99 %

- Thank you
- Questions